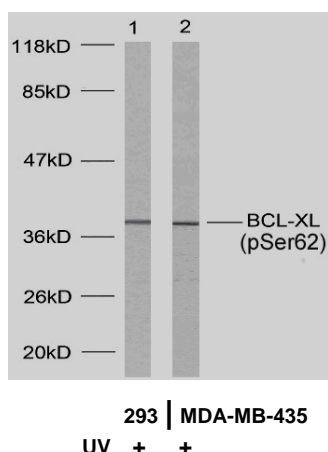


## Rabbit anti BCL-XL (pSer62)

- Catalog Number:** pAP11066
- Amount:** 100µl (for 10 Western Blotting)
- Form of Antibody:** Rabbit IgG in phosphate buffered saline (without  $Mg^{2+}$  and  $Ca^{2+}$ ), pH 7.4, 150mM NaCl, 0.02% sodium azide and 50% glycerol.
- Storage/Stability:** Store at -20°C/1 year
- Immunogen:** The antiserum was produced against synthesized phosphopeptide derived from human BCL-XL around the phosphorylation site of serine 62 (A-D-S<sup>P</sup>-P-A).
- Purification:** The antibody was affinity-purified from rabbit antiserum by affinity-chromatography using epitope-specific phosphopeptide. The antibody against non-phosphopeptide was removed by chromatography using non-phosphopeptide corresponding to the phosphorylation site.
- Specificity/Sensitivity:** BCL-XL (phospho-Ser62) antibody detects endogenous levels of BCL-XL only when phosphorylated at serine 62.
- Reactivity:** Human, Mouse, Rat
- Applications:** WB: 1:1000
- Swiss-Prot No. :** Q07817
- References:** Basu A, et.al.( 2003) Mar 13; 538(1-3): 41-7  
 Cheng E.H.-Y.,et.al. (1996) Nature 379:554-556.  
 Sattler M.et.al. (1997), Science 275:983-986.  
 Muchmore S.W.et.al (1996).Nature 381:335-341  
 Yu J., Zhang L. Mol. (2001)Cell 7:673-682



Western blot analysis using BCL-XL (phospho- Ser62) antibody (pAP11066).

**For Research Use Only**

Contact & Ordering Information: Angio-Proteomie, 11 Park Drive, Suite 12, Boston, MA 02215, USA. Fax: (480) 247-4337, [angioproteomie@gmail.com](mailto:angioproteomie@gmail.com)